

# KSF Miniature displacement sensor



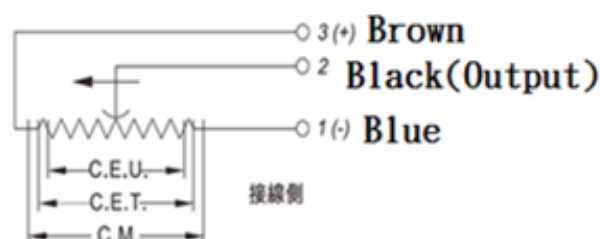
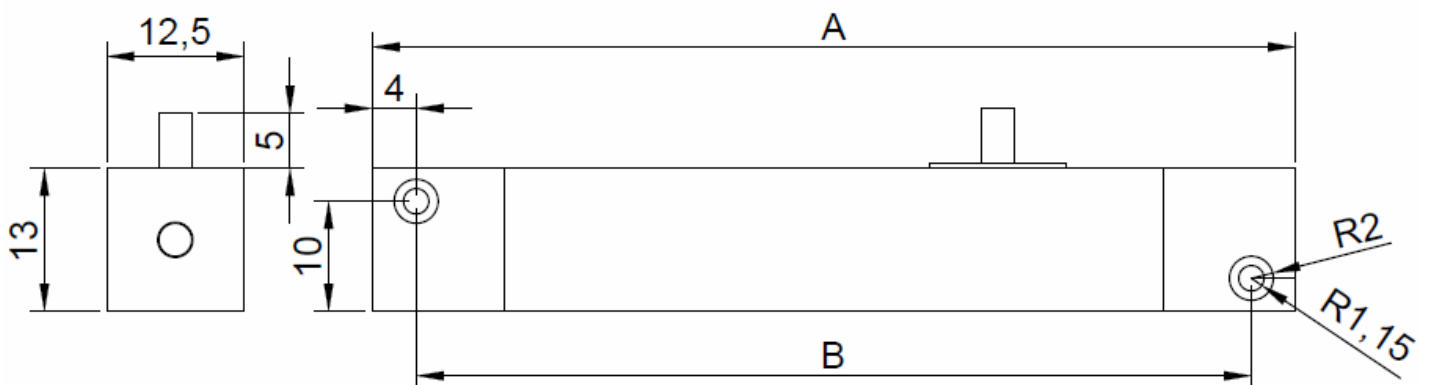
Characteristic::

1. Small size ◦
2. Compact structure ◦
3. Easy to install ◦
4. Widely used in miniature control systems ◦

Advantage :

- Long service life, up to  $50 \times 10^6$  times ◦
- Higher resolution 0.01mm ◦
- High running speed ◦

Installation dimension drawing:



# KSF Miniature displacement sensor

	KSF	KSF	KSF	KSF	KSF
Electrical-parameters					
Model size	15	25	35	50	100
Nominal stroke (mm)	5	10	35	50	100
Electric stroke (mm)	5.5	10.5	35.5	51	101
Standard R(KΩ)	5	5	5	5	5
R tolerance	±10%				
Independent	0.3	0.3	0.3	0.3	0.3
Linearity(%)					
Repeatability precise	0.01mm				
Cusor current	≤1 μA				
Max cusor current	10mA				
Max power supply	≤ 24VDC				
Volts					
Coefficient Volts to	≤1 ppm/°C				
Temp					
Insulation R	≥ 10MΩ				
(500VDC, 1bar, 2s)					
Insulation strength	≤100 μA				
(50Hz, 2s, 1bar, 500VDC)					
Operation force					
Shell Length(A)	行程+36mm				
Mechanical stroke(M)	型號+3mm				
Operation force					
temperature range	40~100°C				
Life time	≥100X 10 <sup>6</sup> 次				
Impact resistance	50g 6ms				
index					
Maximum operating	≤5m/s				
speed					