

KTC Potentionmeter conductive plastic linear



Characteristic:

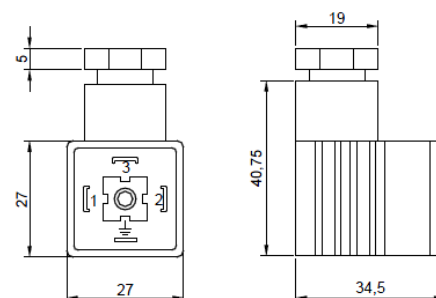
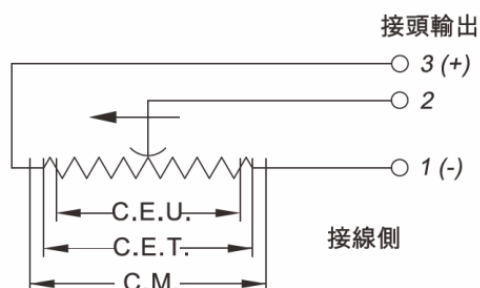
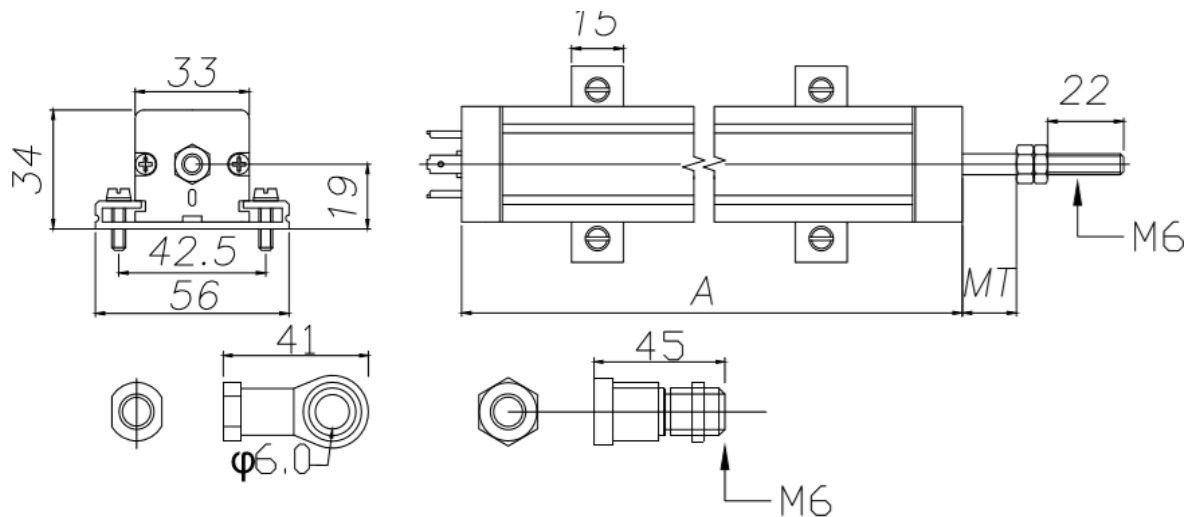
1. Improved design to meet the measurement needs of various conditions .
2. The sensor is rugged and shock-resistant .
3. No electrical signal output changes after theoretical electrical travel, making installation easier .
4. Widely used in plastic molding machines, vertical presses and other production

equipment .

Advantage :

- Long service life, up to 50×10^6 times. .
- Excellent linearity .
- Higher resolution 0.01mm .
- High running speed .
- DIN43650 Standard plug and socket .
- Protection level IP65 .

Installation dimension drawing:



KTC Potentionmeter conductive plastic linear

	KTC	KTC	KTC	KTC	KTC	KTC	KTC	KTC	KTC
Electrical-parameters									
Model size	75	100	150	175	200	225	250	300	350
Nominal stroke (mm)	75	100	150	175	200	225	250	300	350
Electric stroke (mm)	76	102	152	177	203	228	253	304	356
Standard R(K Ω)	5	5	5	5	5	5	5	5	5
R tolerance	$\pm 10\%$								
Independent Linearity(%)	0.15	0.15	0.1	0.1	0.08	0.08	0.05	0.05	0.05
Repeatability precise	0.01mm								
Cusor current	$\leq 1 \mu A$								
Max cusor current	10mA								
Max power supply Volts	42V								
Coefficient Volts to Temp	5 ppm/K								
Insulation R (500VDC, 1bar, 2s)	$\geq 10M\Omega$								
Insulation strength (50Hz, 2s, 1bar, 500VDC)	$\leq 100 \mu A$								
Mechanical Parameter									
Shell Length(A)	139	164	215	240	266	291	317	368	418
Mechanical stroke(M)	83	109	160	185	210	236	261	312	395
Operation force									
Vertical installation	$\leq 0.4N$								
Horizontal installation	$\leq 1.1N$								
Environmental parameter									
Operation temperature	-40~100 $^{\circ}C$								
Life time	>50X 10 ⁶ 次								
Shock	50g 6ms								
Max speed	10m/s 最大								
Protection class	IP65								

KTC Potentionmeter conductive plastic linear

	KTC	KTC	KTC	KTC	KTC	KTC	KTC	KTC	KTC	KTC
Electrical-parameters										
Model size	375	400	450	500	550	600	650	700	750	800
Nominal stroke (mm)	375	400	450	500	550	600	650	700	750	800
Electric stroke (mm)	378	406	457	508	559	610	661	712	762	813
Standard R(KΩ)	5	5	5	5	10	10	10	10	10	10
R tolerance	±10%									
Independent Linearity(%)	0.05	0.05	0.05	0.05	0.05	0.05	0.05	0.05	0.04	0.04
Repeatability precise	0.01mm									
Cusor current	≤1 μA									
Max cusor current	10mA									
Max power supply Volts	42V									
Coefficient Volts to Temp	5 ppm/K									
Insulation R (500VDC, 1bar, 2s)	≥ 10MΩ									
Insulation strength (50Hz, 2s, 1bar, 500VDC)	≤100 μA									
Mechanical Parameter										
Shell Length(A)	441	469	519	570	621	671	712	772	822	873
Mechanical stroke(M)	384.5	410	469	515	566	617	667	718	769	820
Operation force										
Vertical installation	≤0.4N									
Horizontal installation	≤1.1N									
Environmental parameter										
Operation temperature	-40~100°C									
Life time	>50X 10 ⁶ 次									
Shock	50g 6ms									
Max spead	10m/s 最大									
Protection class	IP65									

KTC Potentionmeter conductive plastic linear

	KTC	KTC	KTC	KTC	KTC
Electrical-parameters					
Model size	850	900	950	1000	1250
Nominal stroke (mm)	850	900	950	1000	1250
Electric stroke (mm)	855.5	906	956	1006	1259
Standard R(KΩ)	10	10	10	10	20
R tolerance	±10%				
Independent	0.04	0.04	0.04	0.04	0.04
Linearity(%)					
Repeatability precise	0.01mm				
Cursor current	≤1 μA				
Max cursor current	10mA				
Max power supply	42V				
Volts					
Coefficient Volts to Temp	5 ppm/K				
Insulation R (500VDC, 1bar, 2s)	≥ 10MΩ				
Insulation strength (50Hz, 2s, 1bar, 500VDC)	≤100 μA				
Mechanical Parameter					
Shell Length(A)	923	974	1024	1075	1323
Mechanical stroke(M)	871	922	922	1022	1266
Operation force					
Vertical installation	≤0.4N				
Horizontal installation	≤1.1N				
Environmental parameter					
Operation temperature	-40~100°C				
Life time	>50X 10 ⁶ 次				
Shock	50g 6ms				
Max speed	10m/s 最大				
Protection class	IP65				

KTC Potentionmeter conductive plastic linear

Shipping standard: Hermans connector x 1 Seal x1 Fish eye connector OR Universal joint x1 Aluminum tripod x2 (M5) Screwsx4