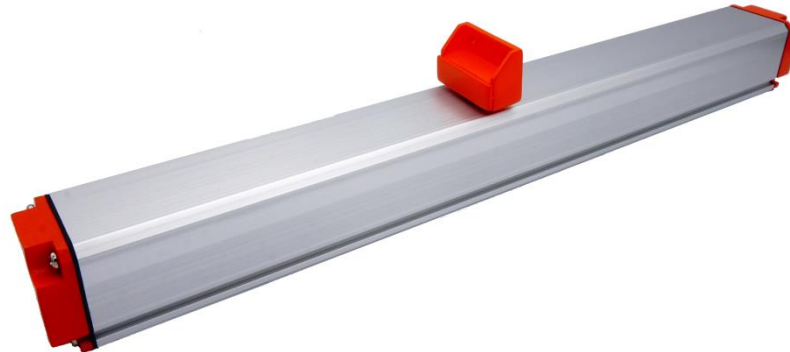


LTF

Contactless magnetostrictive Linear position sensor



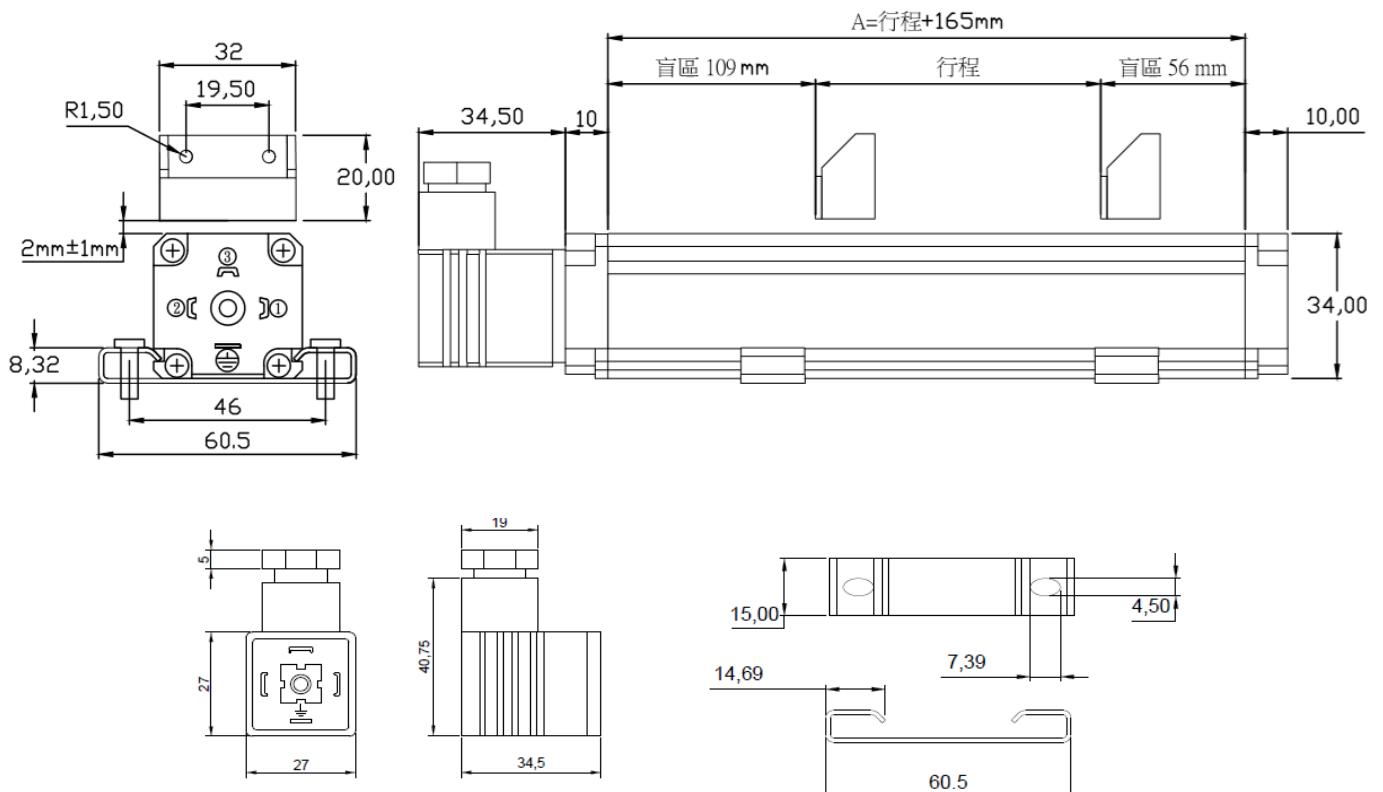
Characteristic:

1. Inductive measurement principle
2. Anti-magnetic field interference
3. Linear measurement, absolute value output
4. No mechanical wear,
5. Allow the slider to offset the movement center line ± 1 mm
6. Not affected by external media, can be used in harsh environments with high pollution and large dust.

Advantage:

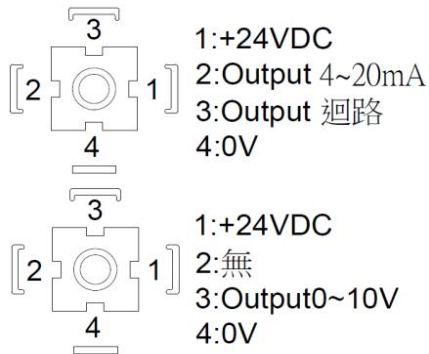
- Unlimited mechanical life ◦
- Excellent linearity ◦
- Higher resolution 0.01mm ◦
- High running speed ◦
- DIN43650 Standard plug and socket ◦
- Protection level IP67 ◦

Installation dimension drawing:



LTF

Contactless magnetostrictive Linear position sensor



Shipping standard:
 Hermans connector x 1
 Seal x1
 brackets x2
 (M4) Screwsx4

LTF

Electrical-parameters

Model size	50mm~1000mm (50mm one unit)	
Nominal stroke (mm)	50mm~1000mm (50mm one unit)	
output signal	0~10 VDC (load $\geq 5 \text{ k}\Omega$)	4~20 mA (load $\leq 500 \Omega$)
Independent linearity	$\leq 0.03\%FS$ (最大 $\pm 90\mu\text{m}$)	
Repeatability	$< \pm 0.005\%$	
Working current	$\leq 100\text{mA}$	
Zero tolerance	$\pm 0.5\text{mm}$	
Operating Voltage	standard 24V(18~30V)	
Reverse protection	Yes	
Temperature error	≤ 15 (最小 0.01 mm/K)ppm/k	
Insulation resistance (500 VDC)	$\geq 10\text{M}\Omega$	

Mechanical Parameter

Shell Length(A)	Model +165mm
Operation force	
Suspension height	Standard height 2mm allow $\pm 1\text{mm}$
Left and right deviation	Standard center Allowable deviation $\pm 1\text{mm}$
Operation temperature	$-40\sim 80^\circ\text{C}$
Life time	unlimited
Shock	50g 6ms
Max speed	10m/s smost
Protection class	IP67

LTF

Contactless magnetostrictive Linear position sensor

LTF-□□□-□

Model size

V: 0~10

A: 4~20mA